



LED Control Card

User Manual



**Please read the user manual carefully
before use our LED control card.**

User Manual for Connecting Y series with camera

Statement

Any companies or privates cannot copy, transcribe or translate part or whole content of this file without our written permission. And cannot use it on any business or benefit filed with any forms.

The specifications and information which are mentioned on the file is for reference only, if there's update, we will not inform you. This file is only for guidance, and all information will not be for any promises.

CATALOG

Brief Introduction	1
About Software	1
Guiding	2
Preparation	2
Equipment Connection	2
Setting for Infrared Camera	3
Step 1 Select software	3
Step 2 Set Parameters.....	3
Add Network Camera in Software	4
Step 1 Install software.....	4
Step2 Band with Controller	4
Add Video	4
1. Add high resolution video.....	4
2. Add Living Address	4
Live Streaming	5

Brief Introduction

Thanks for ordering LED control card. The design of the control card is according to the international and industrial standard, but if the operations are incorrect, it will probably bring you personal injury and financial harm. As to avoid these and win more from your equipment, please obey the specifications of this file.

About Software

Cannot do any modification, decompilation, disassembling, decoding or reverse engineering on our software, it' s illegal.

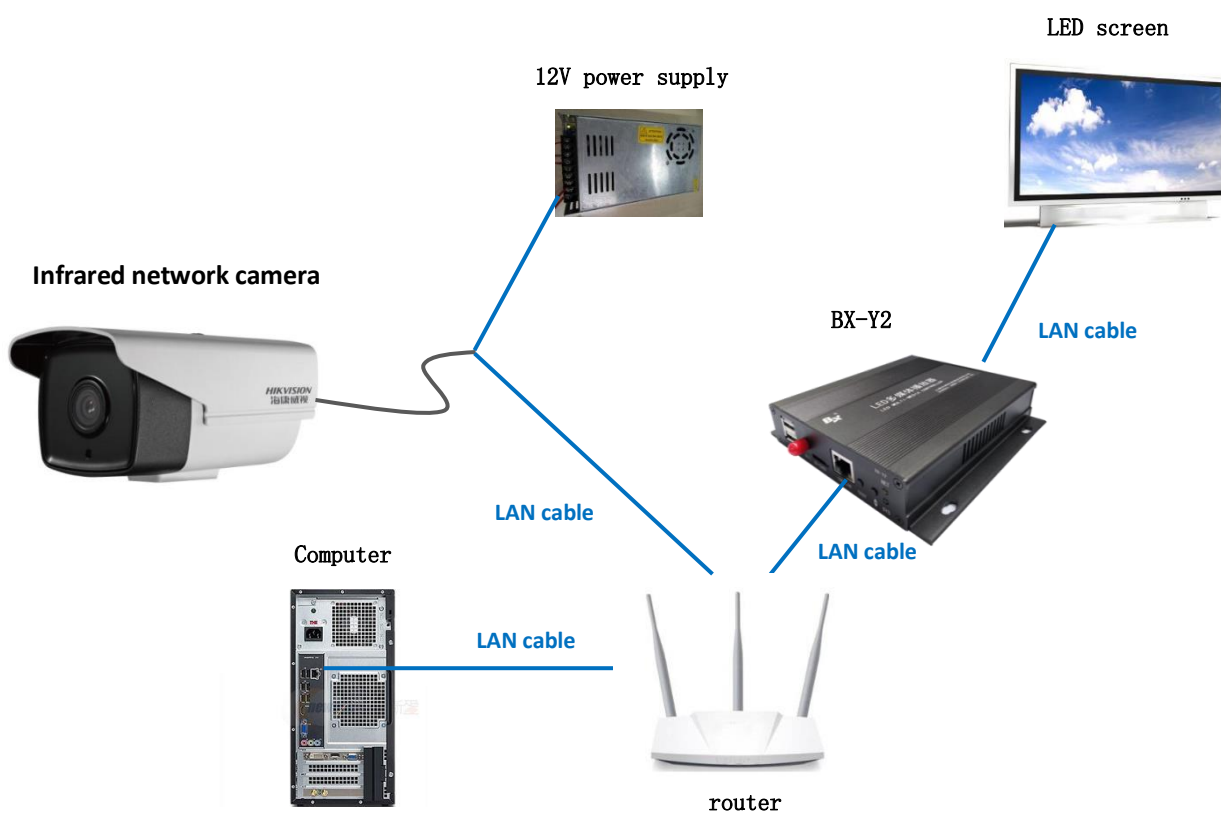
Guiding

Preparation

PC, LedshowYQ 2018 software, Y series control card, infrared network camera, LAN cable, 12V power supply.


Equipment Connection

PC connects with router – Y series controller connects with router by LAN cable – PC connects with infrared network camera by LAN cable, as below:




Setting for Infrared Camera

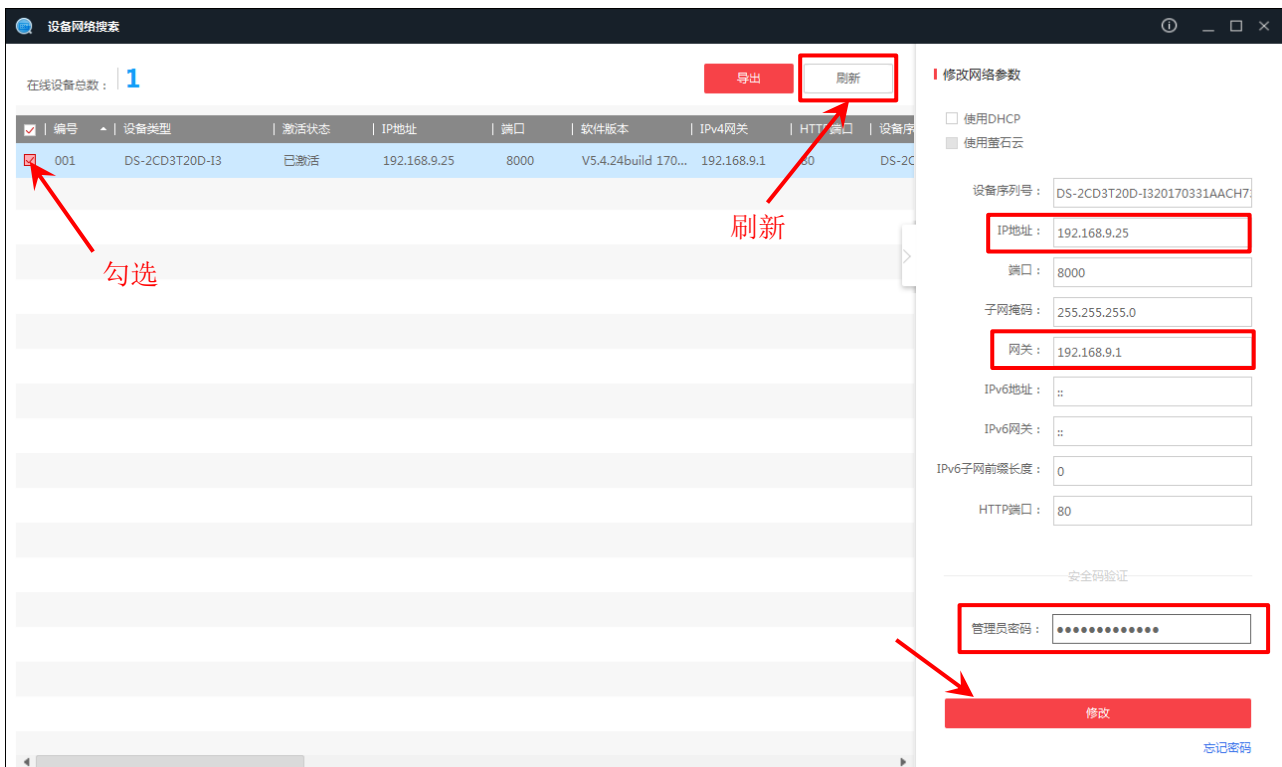
Step 1 Select software

Install official SADPTool, choose  SADPTool , install.

Step 2 Set Parameters



After install software, open , click refresh on the top right corner, then, you can check the IP information of the equipment which connected with network, and select the equipment you need to connect and input IP address, gateway, passwords, lastly, click “modify” .





Add Network Camera in Software

Step 1 Install software

Install LedshowYQ 2018 software and open it, as below:


Step2 Band with Controller

Click "add screen"  - select the controller you need to add – set width and height parameters. (firstly click )



Add Video

1. Add high resolution video

Click  - select "high resolution video" in "video" . Or you can "add video area" on "edit" . After add high resolution video, please choose "live streaming" , as below:



2. Add Living Address

Input rtsp protocol url address of camera in "live address" , then click "OK" .

Format: `rtsp://[username]:[passwd]@[ip]:[port]`

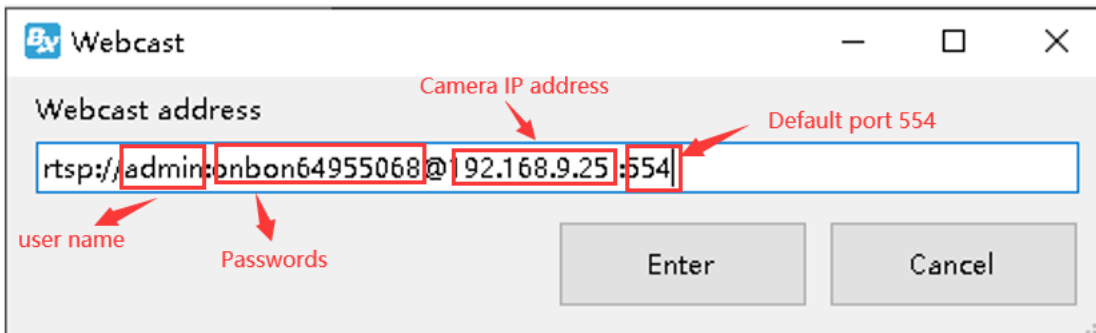
username: equipment username, for example: admin

passwd: equipment passwords, for example: onbon64955068

ip: equipment IP address, for example: 192.168.9.25

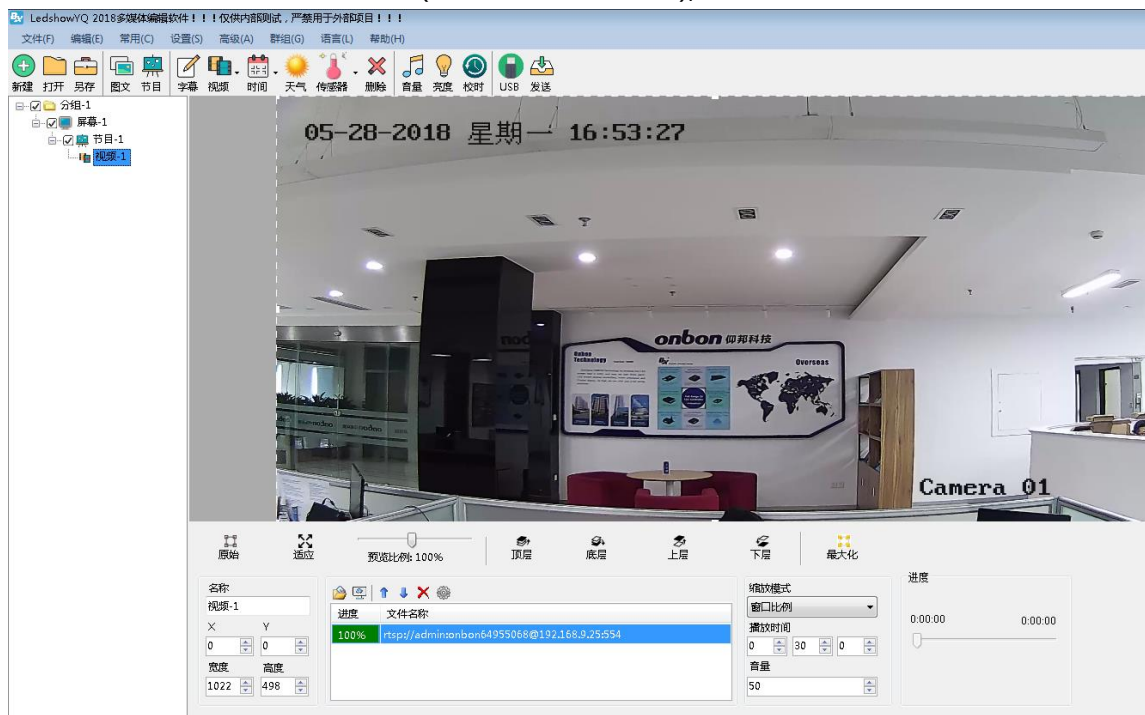
port: default port number is 554

As below:



Live Streaming

It will be showed on Preview area (also on LED screen), as below:



Shanghai ONBON Technology Inc.

Address: 7 Floor, Tower 88, 1199#, North Qinzhou Road,
Xuhui District, Shanghai City, China

Website: www.onbonbx.com



ONBON Wechat number

ONBON (Jiangsu) Optoelectronic Industrial Co.,LTD

Address: 1299#, Fuchun Jiang Road, Kunshan City,
Jiangsu Province, China

website: <http://www.iledcloud.com/>